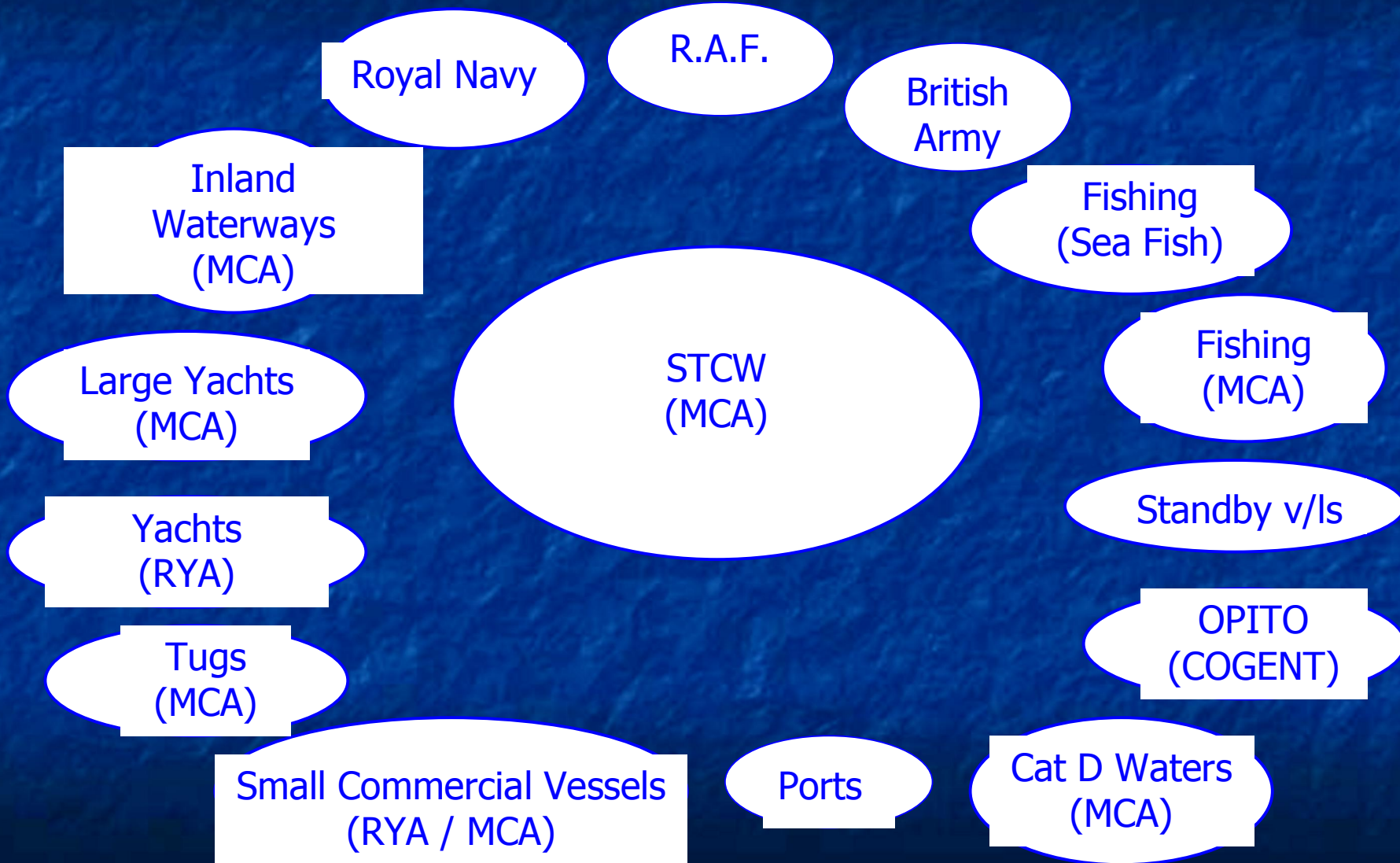


Smoothing the Way

Progression Routes from various
entry points to full
STCW certification for
Deck and Engineering Officers.

Maritime Sectors



We are not alone...

1. STCW Convention
2. EU Competence
3. EMSA

Framework

1. 1978 STCW Convention as amended
2. EU Directive 2008/106 (recasting 2001/25/EC, 2002/84/EC, 2003/103/EC and 2005/45/EC)
3. MS Training and Certification Regs S.I. 1997/348, (amended by 1997/1911, 1997/2971, 2000/836, 2004/302 and 2006/89)

MN Officer Training

- 1845 – 'Board of Trade' examinations (Deck)
- 1862 – 'Board of Trade' examinations (Engine)
- Certificates of Service
- HNC / HND
- MCA/SQA academic and professional papers
- Foundation and Honours Degrees
- Scottish equivalents – NC & Prof. Development
- Rating to officer schemes
- Letters of Initial Assessment (Engineering)
- Sea Service and on-board training
- STCW specific short courses

Principles

1. No repetition

BUT

2. Level of learning

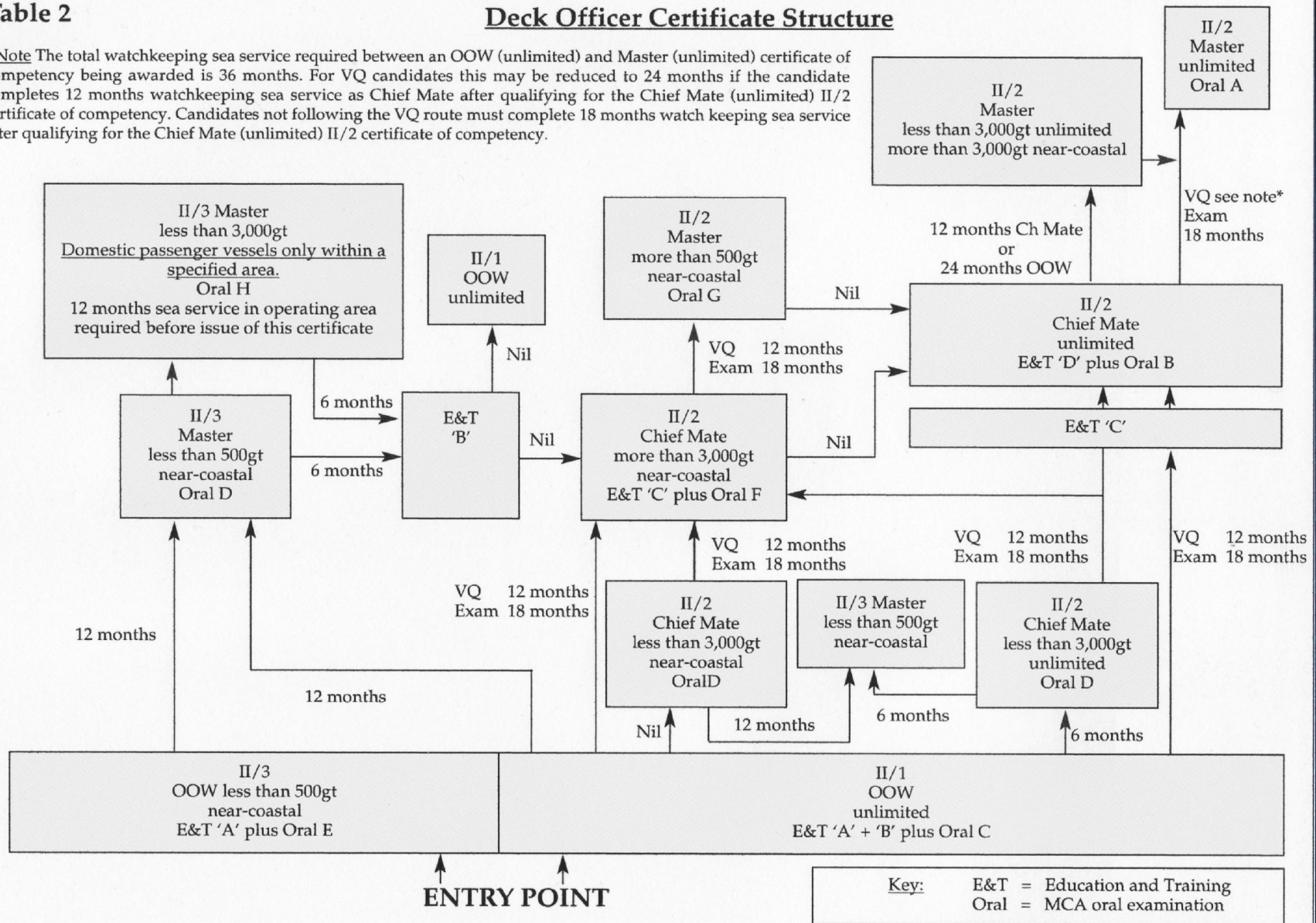
3. Rigour of assessment

4. Currency of knowledge

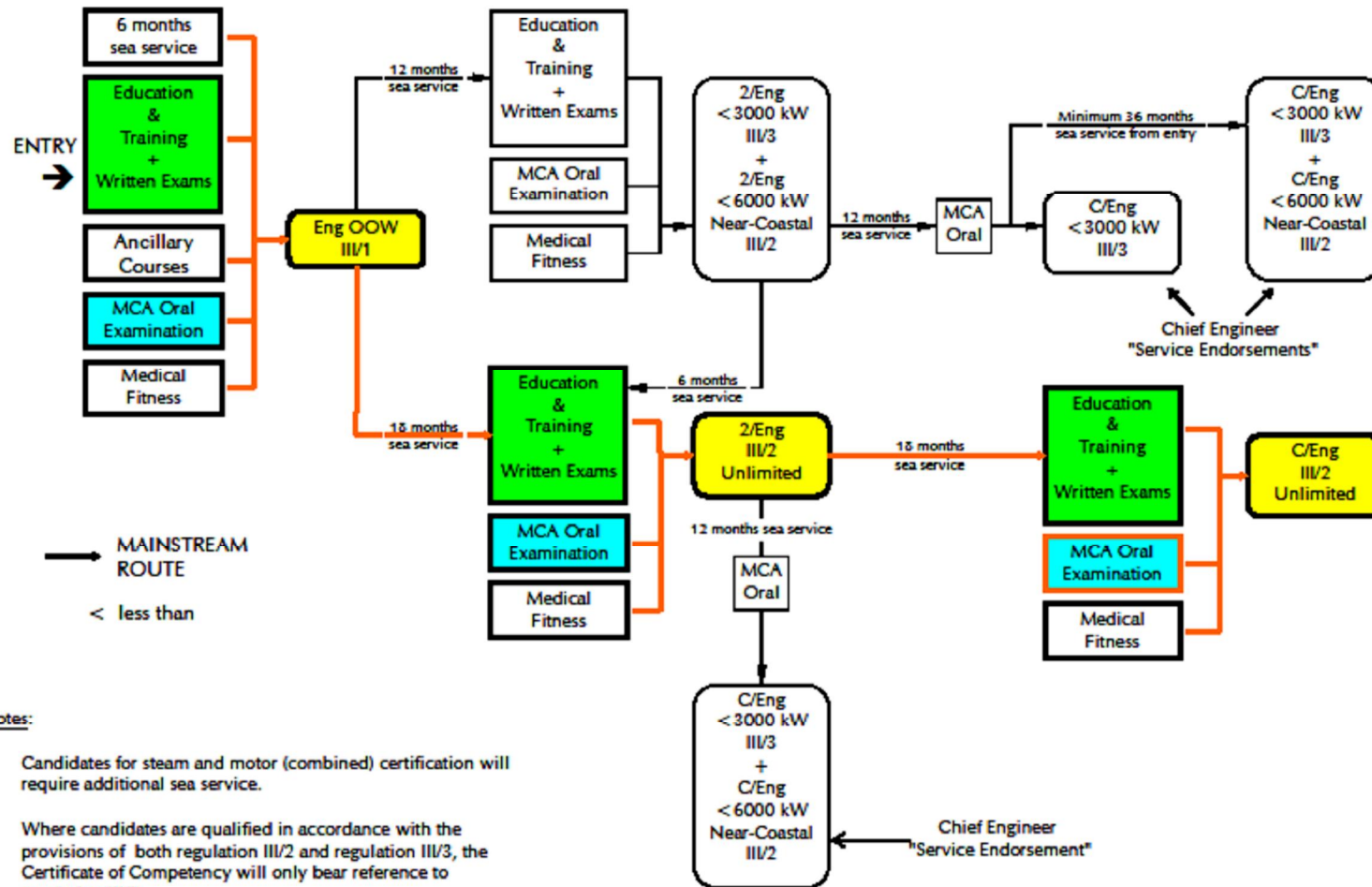
Table 2

Deck Officer Certificate Structure

* **Note** The total watchkeeping sea service required between an OOW (unlimited) and Master (unlimited) certificate of competency being awarded is 36 months. For VQ candidates this may be reduced to 24 months if the candidate completes 12 months watchkeeping sea service as Chief Mate after qualifying for the Chief Mate (unlimited) II/2 certificate of competency. Candidates not following the VQ route must complete 18 months watch keeping sea service after qualifying for the Chief Mate (unlimited) II/2 certificate of competency.



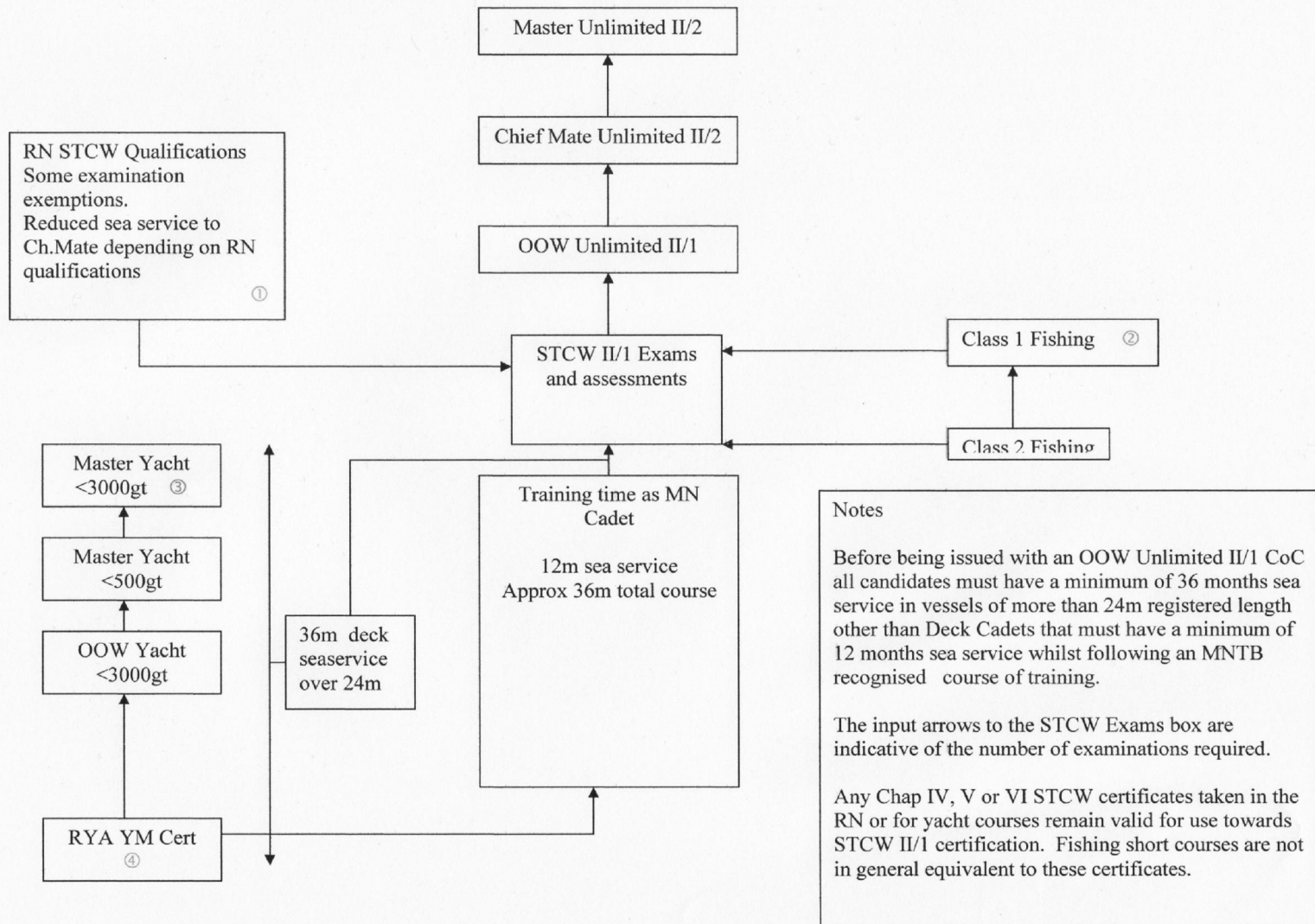
Engine Officer Examination Route



Notes:

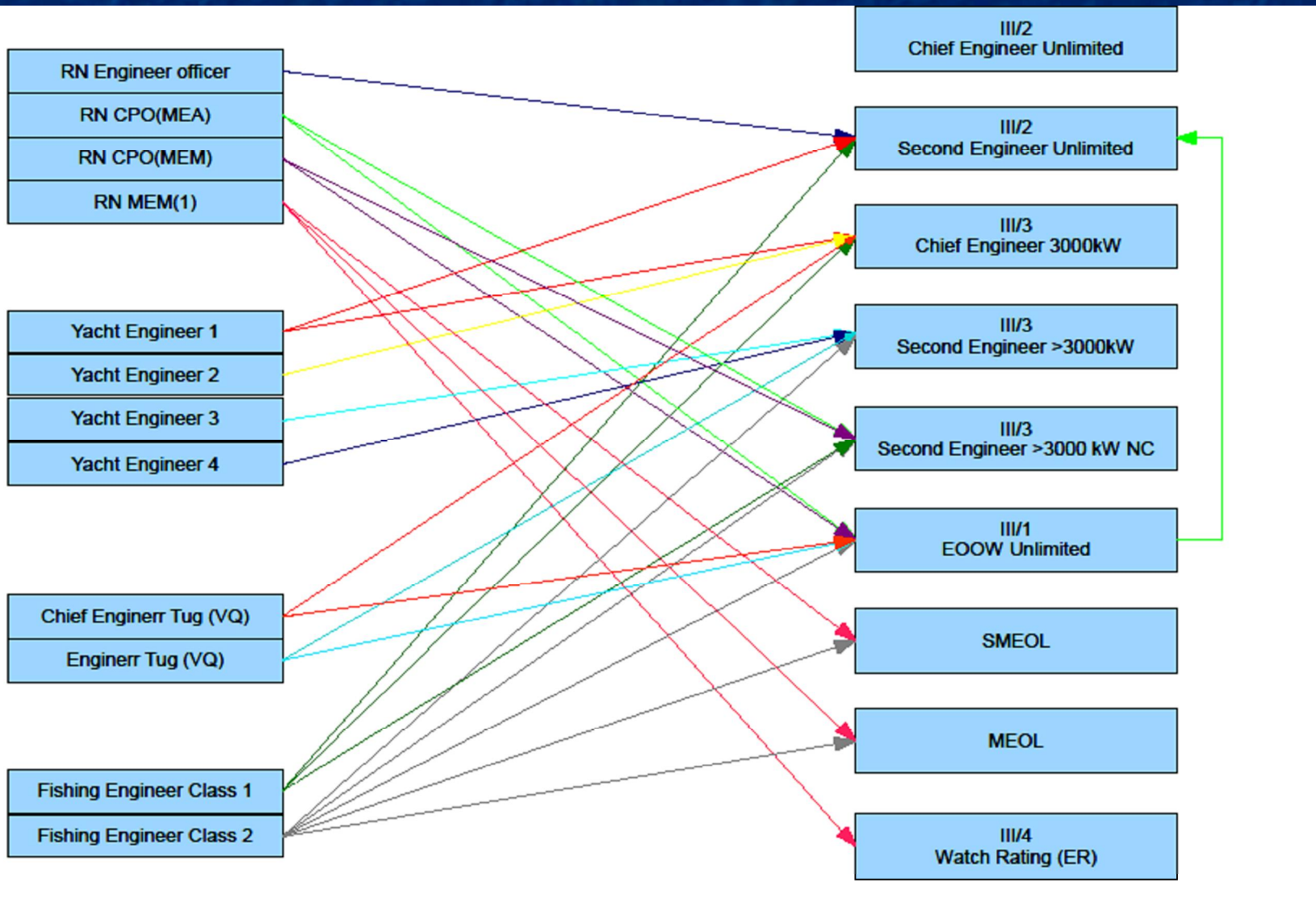
- 1 Candidates for steam and motor (combined) certification will require additional sea service.
- 2 Where candidates are qualified in accordance with the provisions of both regulation III/2 and regulation III/3, the Certificate of Competency will only bear reference to regulation III/2.

Transfer Paths: Selected sectors (deck)

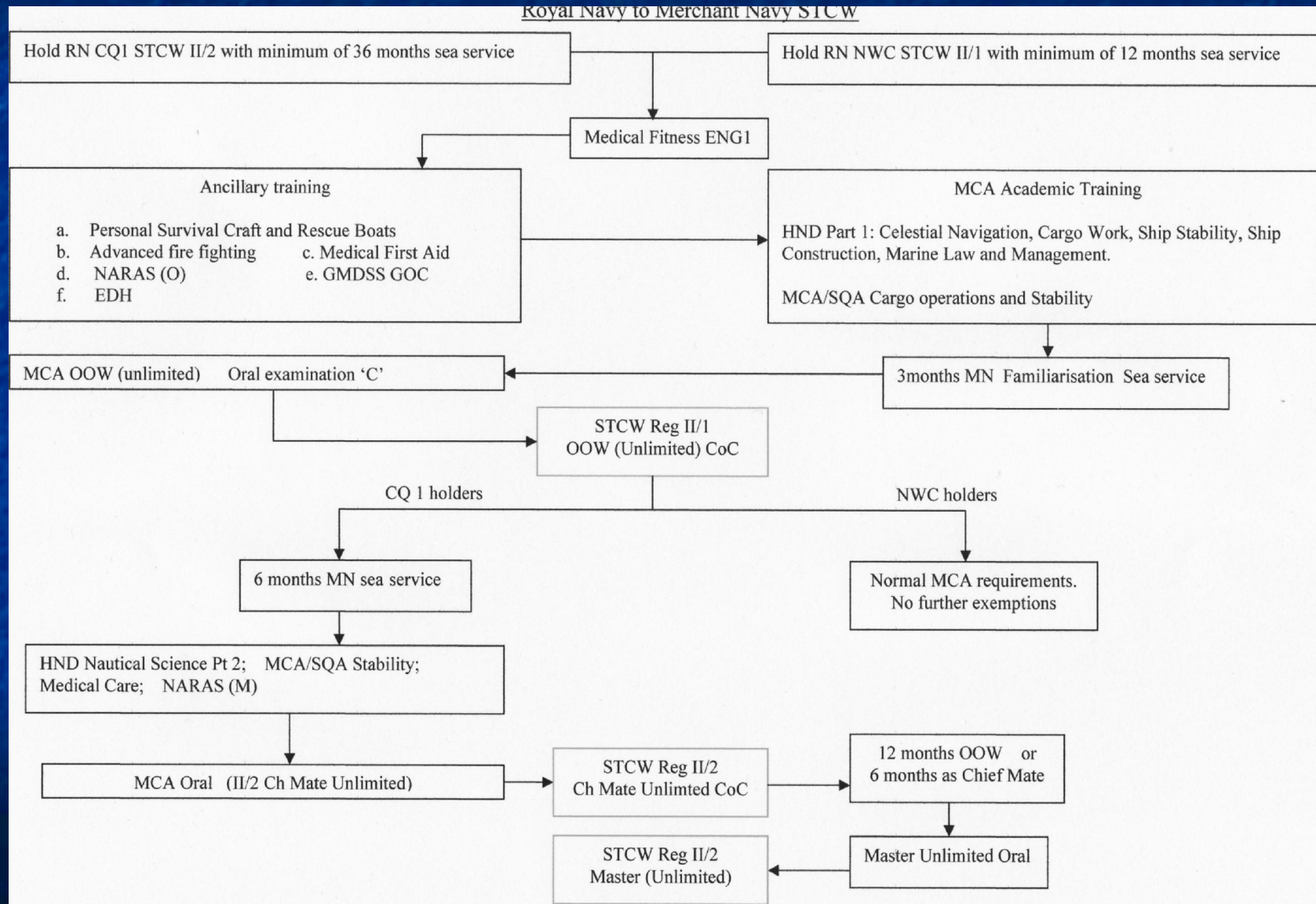


Engineers

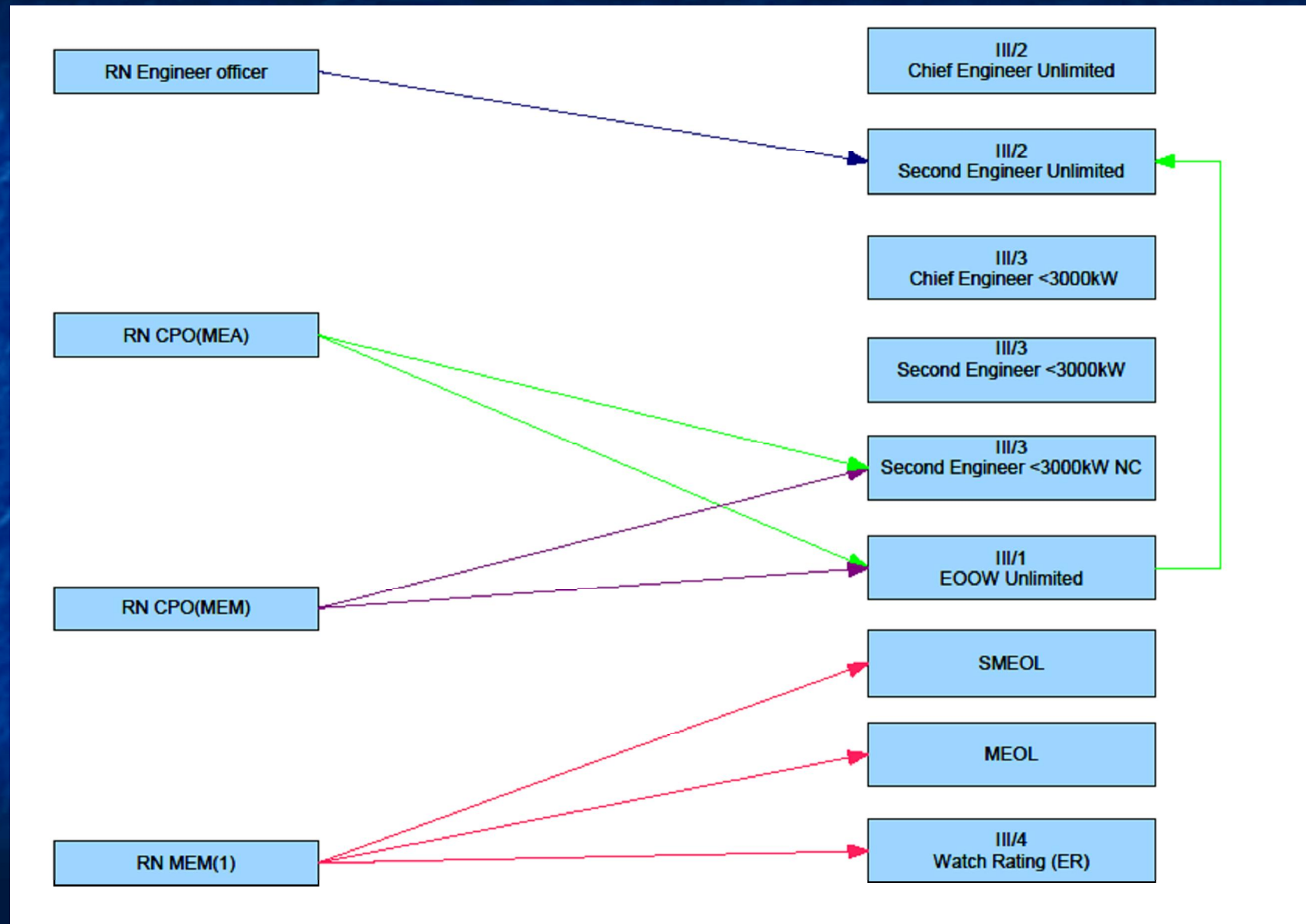
...and this is only the routes to the main stream



RN to MN: latest MOU dated 2010



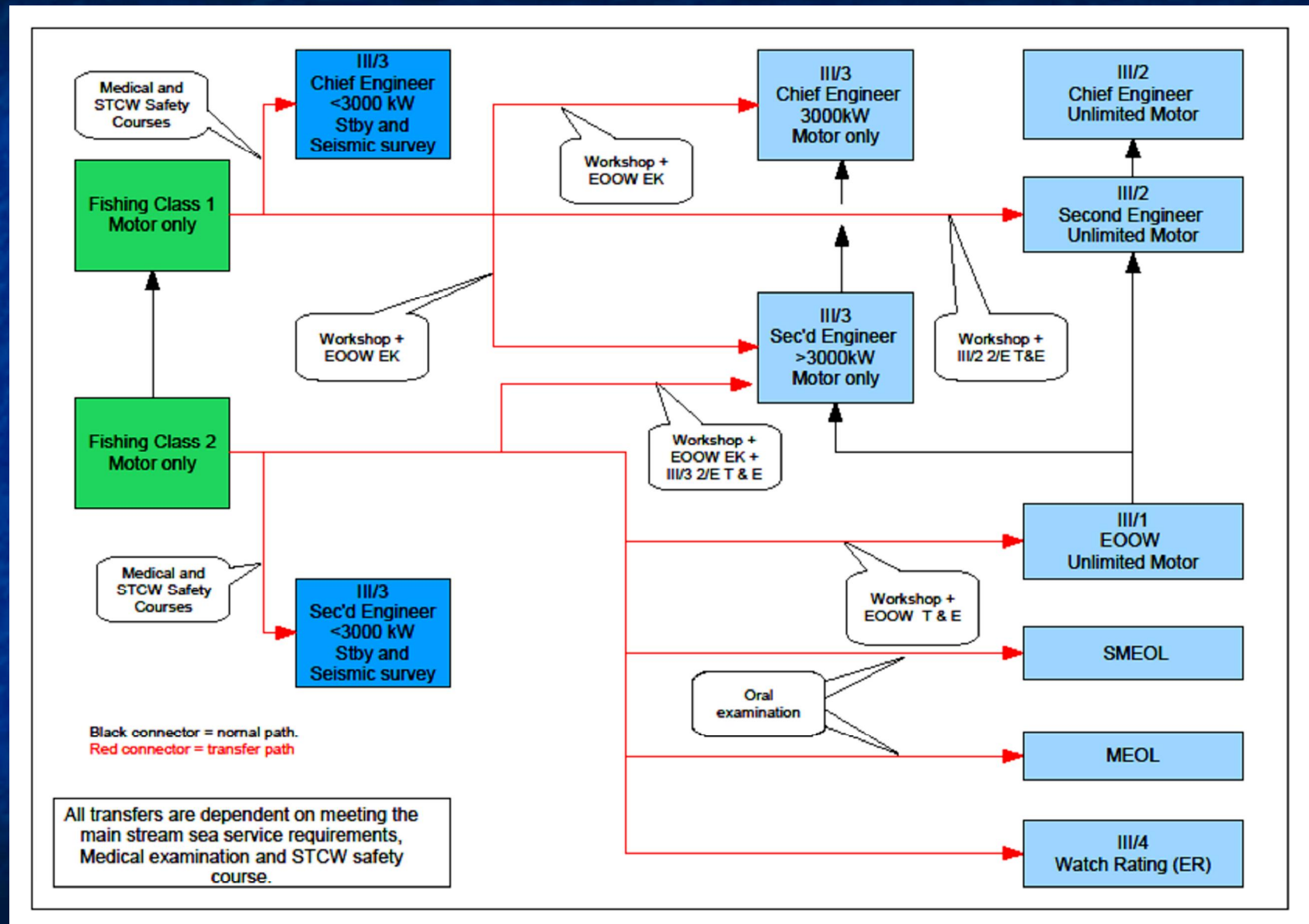
Engineering: RN to Merchant Vessels



Deck Fishing to STCW

1. Class 1 CoC to OOW requires cargo unit
2. All other fisherman require full OOW UPK
3. ALL fishermen require relevant STCW OOW short course certificates
4. Standby vessels and 'small quantities of cargo'

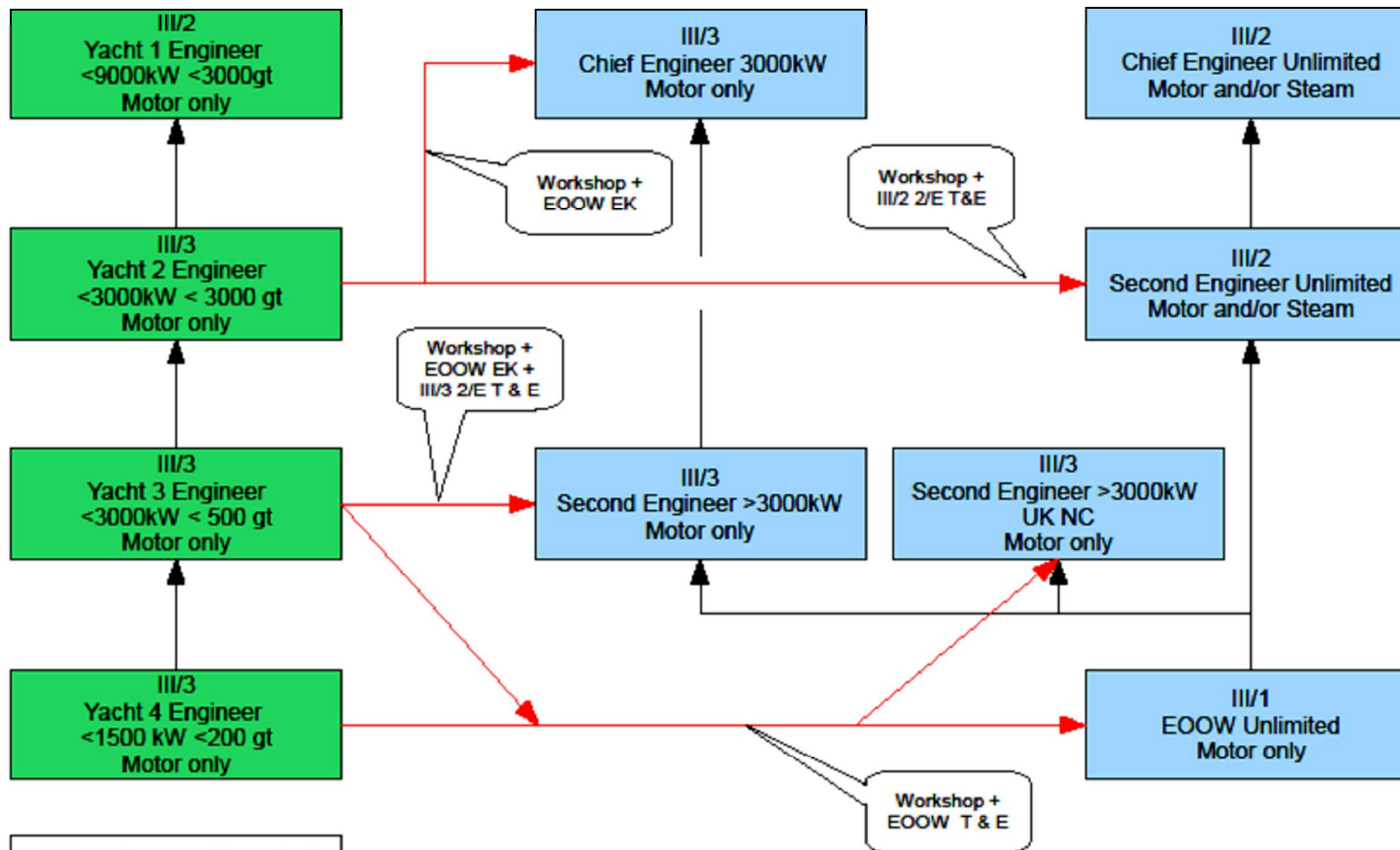
Engineering: Fishing to STCW



Large Yachts to M.N.

1. Already STCW – see MGN 156 and 1802
2. Progress from RYA Yachtmaster
3. Syllabus adjusted for Large Yachts
4. STCW approved short courses
5. 13-36 Code
6. Yachts are getting bigger: 'Glass Ceiling'

Engineering: Yacht to Merchant Vessel



All transfers are dependent on meeting the main stream sea service requirements

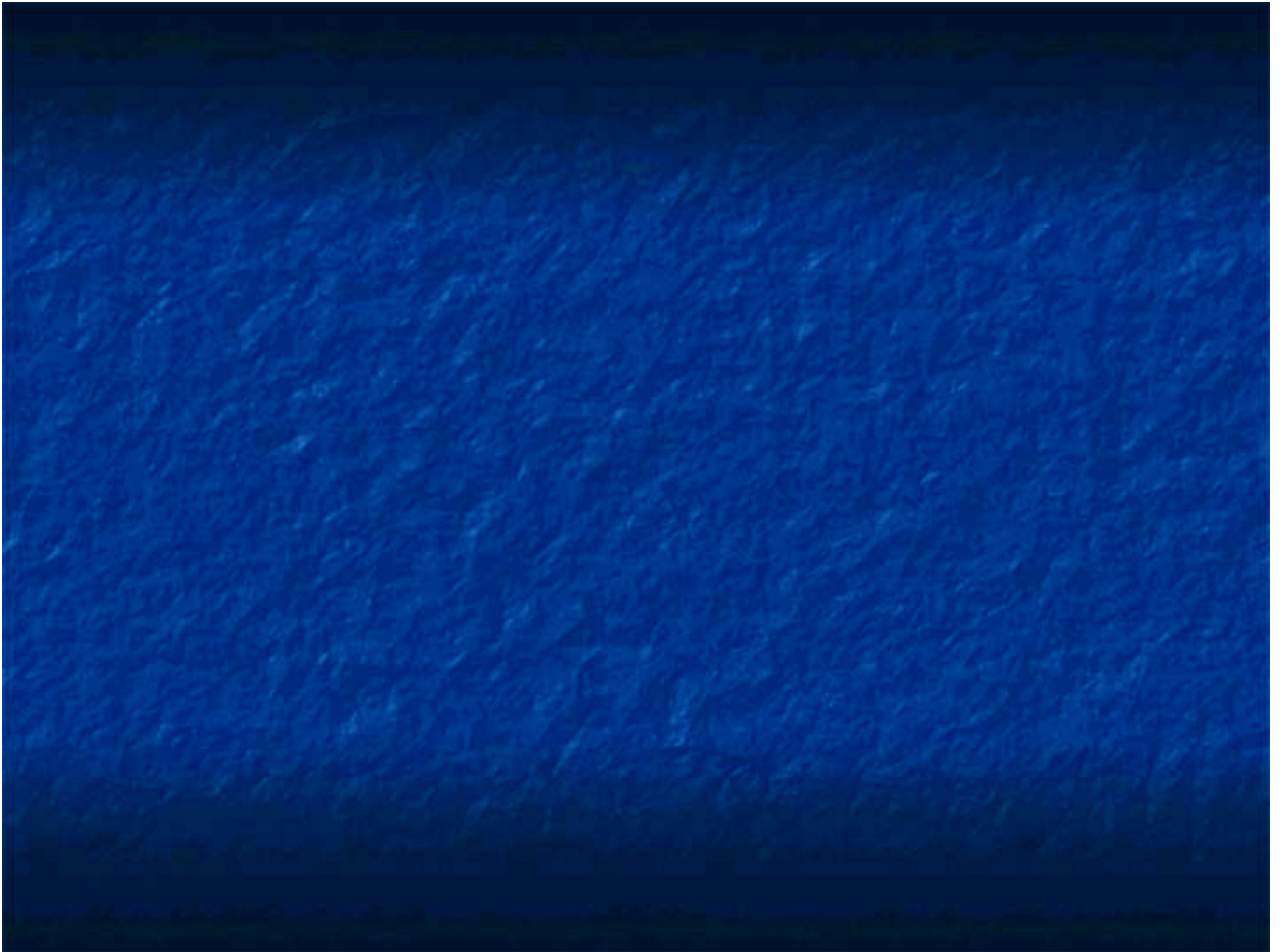
Black connector = normal path.
Red connectors = transfer path

Things to remember... or at least be aware of

1. National Occupational Standards
2. SMarT funding (DfT)
3. Funding: Other Government agencies
4. Qualification Credit Framework

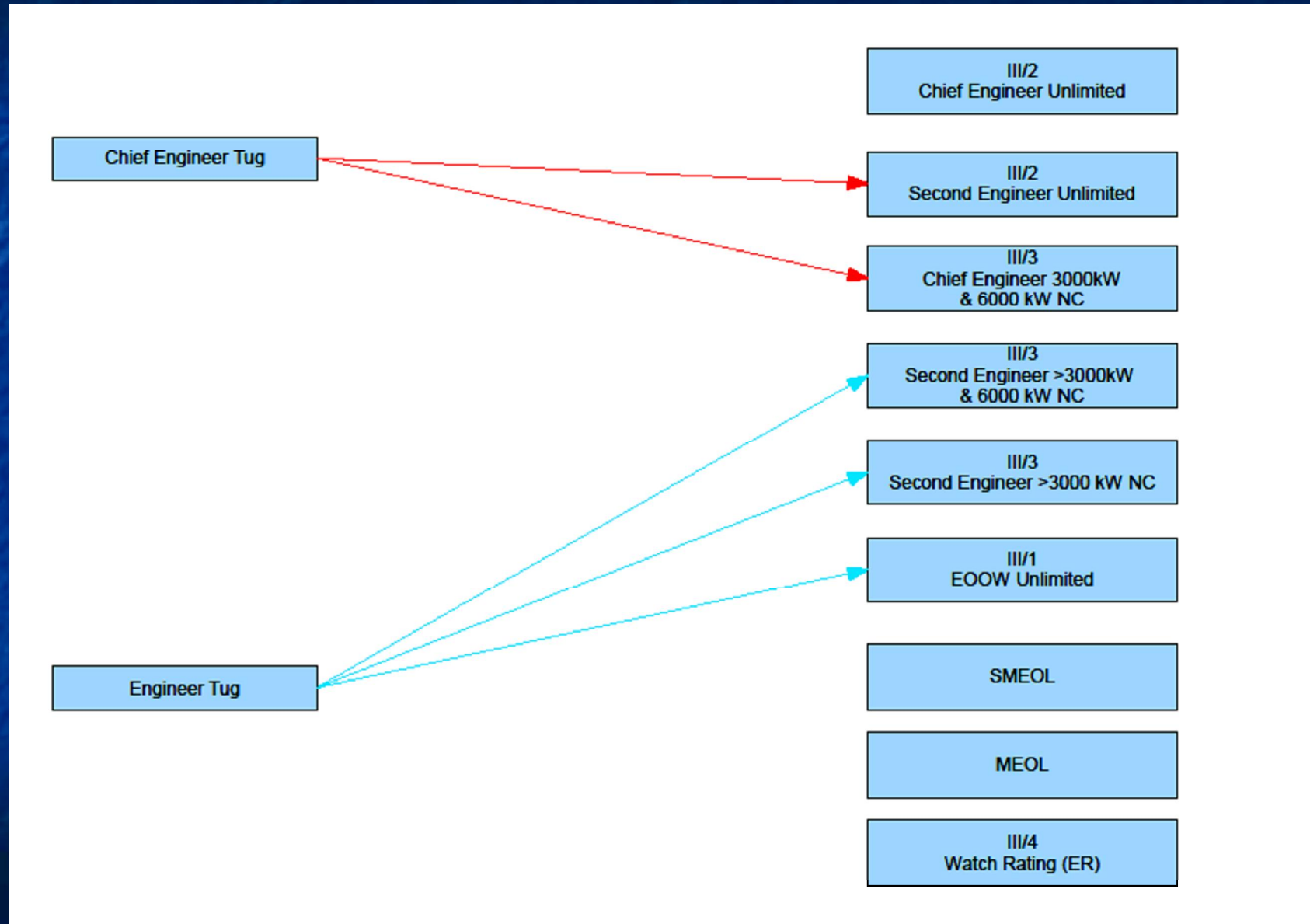
Quo Vadis?

- Maritime Skills Alliance
- Maritime Studies Qualifications
- Sea Fish equivalency for Code Vessels
- 500GT workboats (unlimited area)
- Voluntary Towage endorsement
- Inland Waterways to Near Coastal:
discussions forthcoming

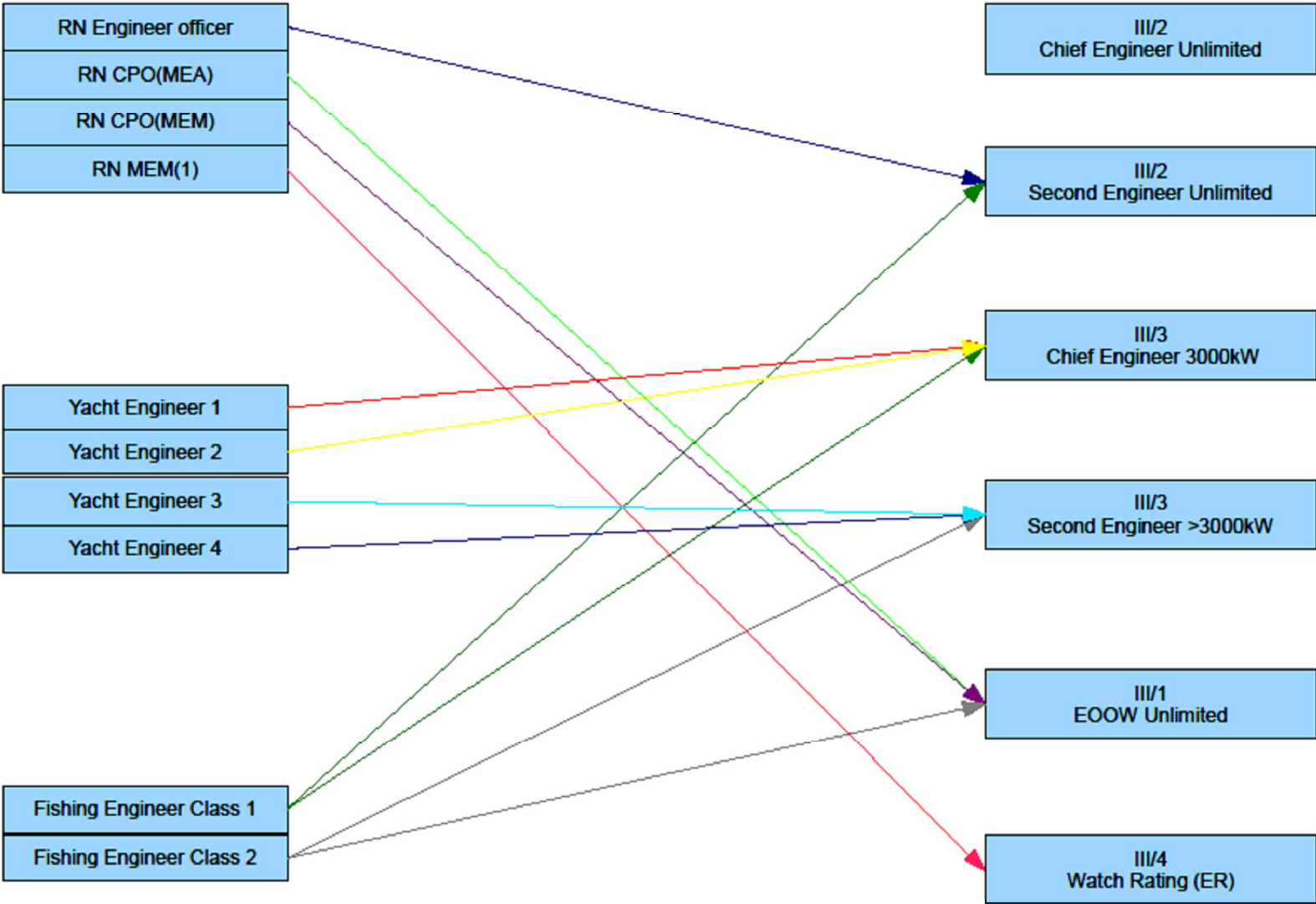


And for those who haven't had enough flow
charts.....

Don't know if you are going to mention tugs

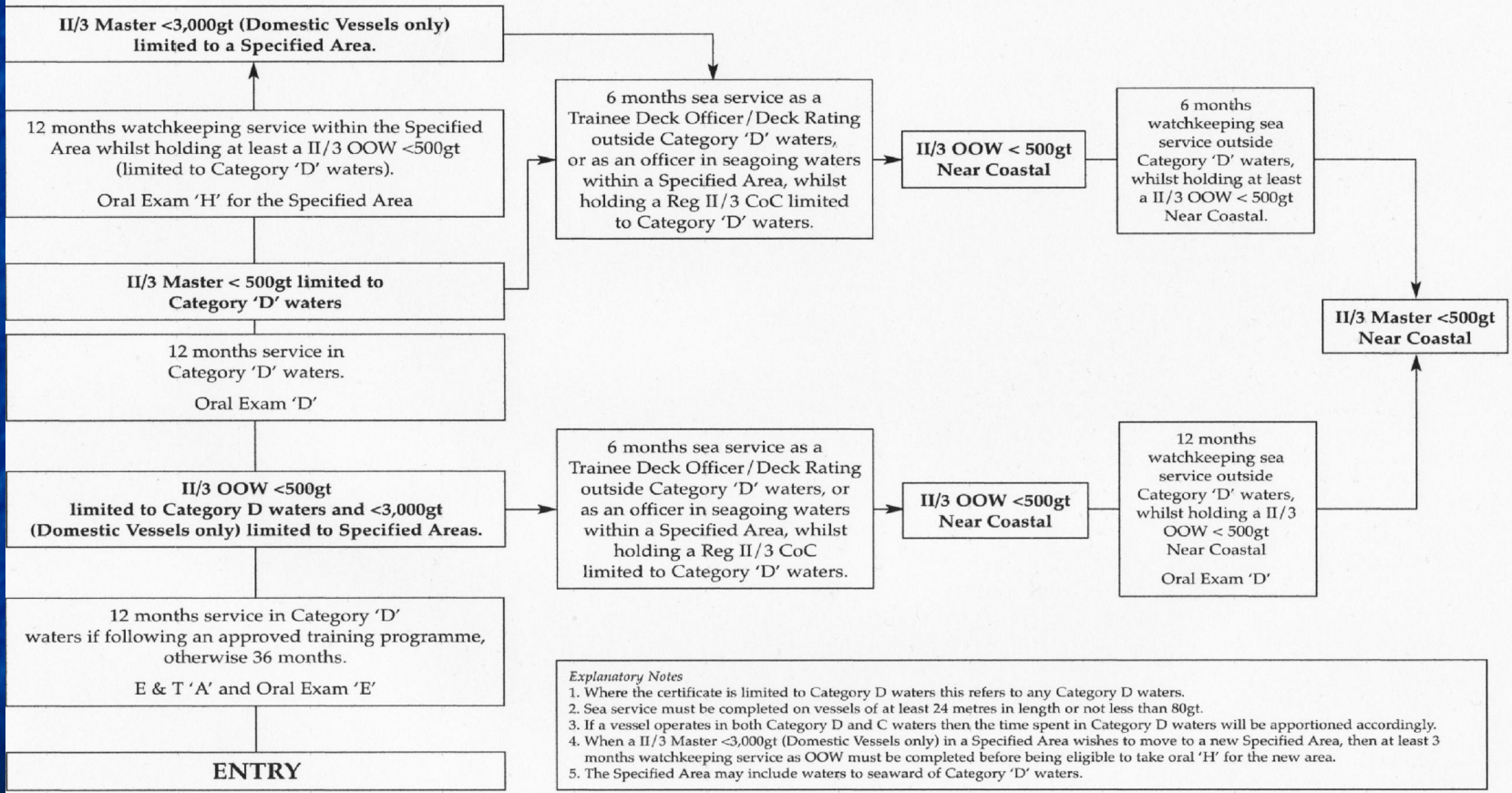


Transfer Paths: Selected sectors (Engineering)



CATEGORY 'D' WATERS DECK OFFICER CERTIFICATE STRUCTURE

ANNEX A



Explanatory Notes

1. Where the certificate is limited to Category D waters this refers to any Category D waters.
2. Sea service must be completed on vessels of at least 24 metres in length or not less than 80gt.
3. If a vessel operates in both Category D and C waters then the time spent in Category D waters will be apportioned accordingly.
4. When a II/3 Master <3,000gt (Domestic Vessels only) in a Specified Area wishes to move to a new Specified Area, then at least 3 months watchkeeping service as OOW must be completed before being eligible to take oral 'H' for the new area.
5. The Specified Area may include waters to seaward of Category 'D' waters.